

Brand New Fitted Offices to Let

33 Creechurch Lane, EC3



Transport Links

- 0.20 miles from Aldgate
- 0.40 miles from Liverpool Street
- 0.40 miles from Tower Hill
- 0.50 miles from Bank

Lease

New leases are available direct from the Landlord for terms by arrangement.

Service Charge

Estimated at £14.53 per sq. ft.

VAT

The building has not been elected for VAT.

Accommodation

Upper Grd 3,193 sq. ft. 297 m²

Rent

£52.50 per sq. ft.

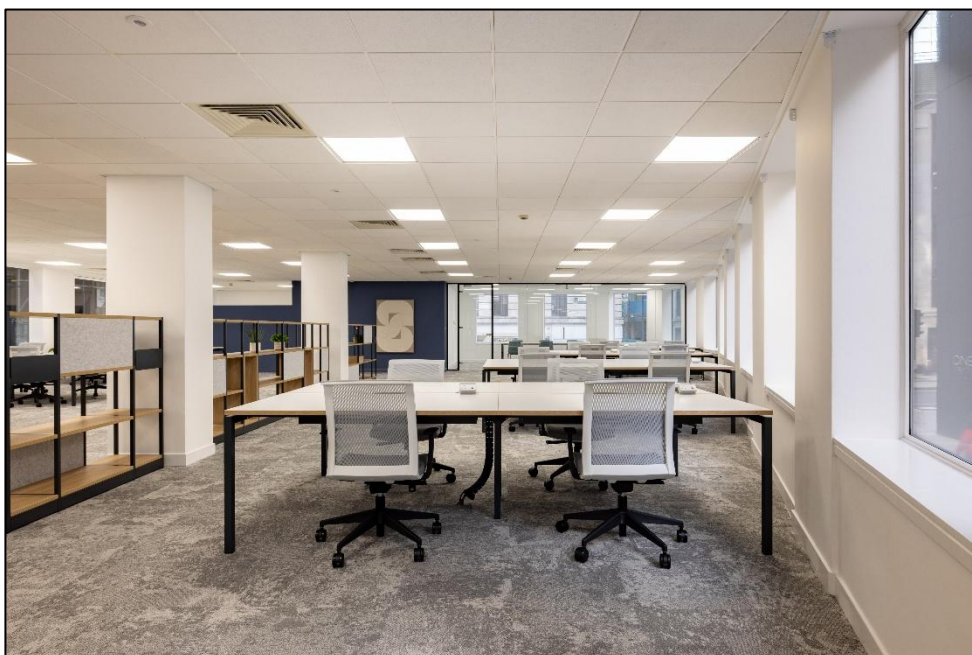
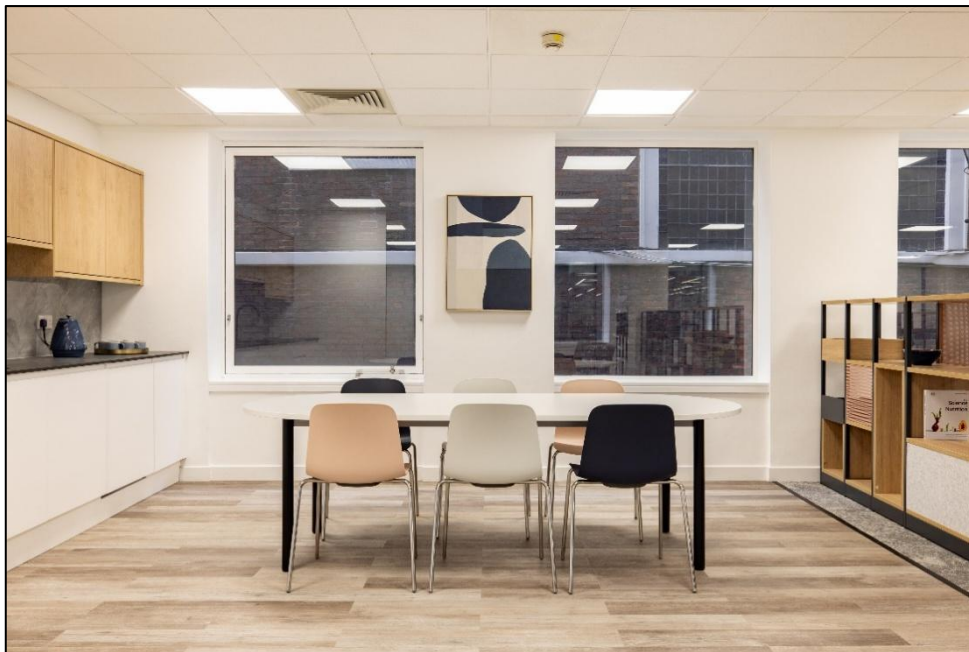
Rates Payable (2024/25)

Upper Ground – Estimated at £20.12 per sq. ft.

However, all interested parties should make their own enquiries.

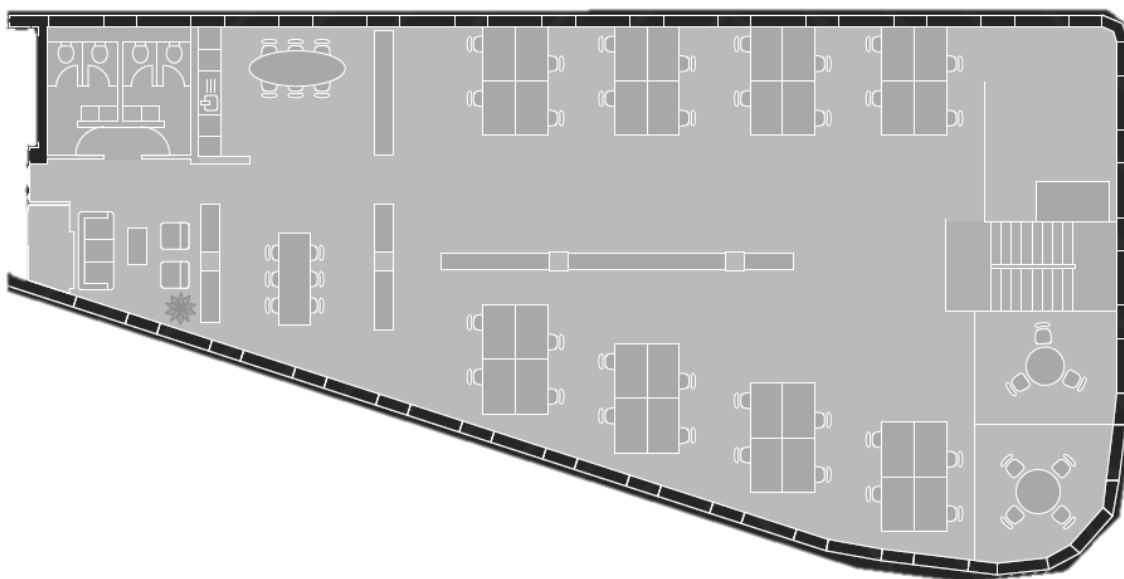
Amenities

- VRF air conditioning system
- Upgraded reception with commissionaire
- 3rd floor (North) brand new fit out
- Bike racks & shower facilities
- New LED lighting
- Raised floors with data & cabling
- EPC – B rating
- 32 desks
- Kitchen/Breakout Area
- Board room
- Meeting rooms





Upper Ground Layout



Newton Perkins

Jonathan Beilin – 07976 392 016
E-mail: jb@newtonperkins.com

Harry Woods – 07884 392 016
E-mail: hw@newtonperkins.com

Newton Perkins LLP, Peek House, 20 Eastcheap, London EC3M 1NP

Newton Perkins for themselves and for the vendors or lessors of this property whose agents they are given notice that:- (1) The particulars are set out as a general outline for the guidance of the intending purchasers and do not constitute part of an offer or contract; (2) All descriptions, dimensions, references to condition and necessary permissions for use and occupation and other details are given without responsibility and any intending purchasers should not rely on them as standards or representations of fact but must satisfy themselves by inspection or otherwise as to the correctness of each of them; (3) No persons in the employment of Newton Perkins has any authority to make or give any representation or warranty whatsoever in relation to this property